

# Case for Support – The Hunstead Project & Schoolstead Programme

A Regenerative Rural and Educational Innovation for the UK/EU Region



**Policy Alignment:** EU Green Deal & UK National Priorities



**Regenerative Model:** Environment, Education & Economy



**Strategic Value:** Evidence, Impact & Feasibility

# INTEGRATED RESPONSE: THE HUNSTEAD & SCHOOLSTEAD INITIATIVE

A Regenerative Model for Rural, Educational, and Environmental Resilience



## SOIL LOSS & ENVIRONMENTAL DEGRADATION

- Reverses depletion
- Enhances biodiversity
- Carbon sequestration



## EDUCATIONAL DISCONNECTION

- Outdoor learning
- STEM integration
- Climate literacy



## THE 100-KEYS MICRO-HOMESTEAD NETWORK

Fractional regenerative models for living, food, and creative zones.

## RURAL DECLINE & ECONOMIC STAGNATION

- Revitalizes communities
- Creates local jobs
- Sustainable economy



## ESG SCRUTINY & INSTABILITY

- Measurable impact
- Verifiable data
- Long-term value



## SCHOOLSTEAD OUTDOOR CLASSROOMS

Micro-farms and narrative-driven STEM education.



**ENVIRONMENTAL RETURNS:**  
Verifiable Ecological Impact



**SOCIAL RETURNS:**  
Community & Educational Growth



**ECONOMIC RETURNS:**  
Sustainable Rural Prosperity

# CONTEXT & RATIONALE: ENVIRONMENTAL DEGRADATION & RURAL RESILIENCE

Mission Soil: Evidence of Accelerating Decline & Urgent Need for Place-Based Intervention.

## CRITICAL SOIL DEGRADATION



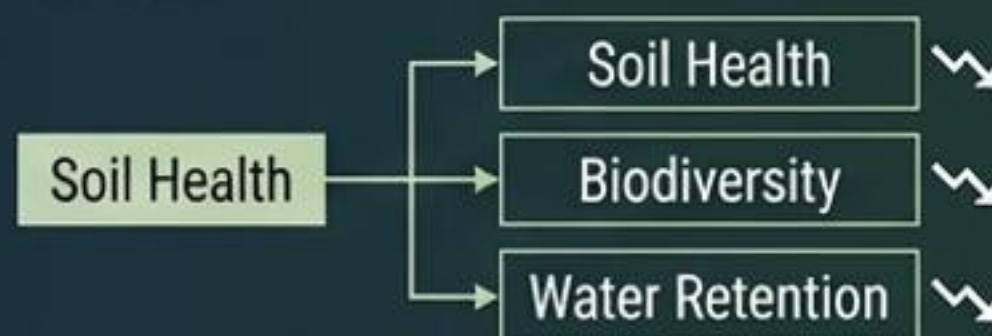
**60-70%**  
SOIL DEGRADATION

- Confirmed by Mission Soil; vital nutrients lost, structure compromised.

## ACCELERATING BIODIVERSITY LOSS & WATER ISSUES



- Rapid species decline & habitat fragmentation
- Water retention capacity falling; increased flood risk
- Ecosystem services under severe strain.

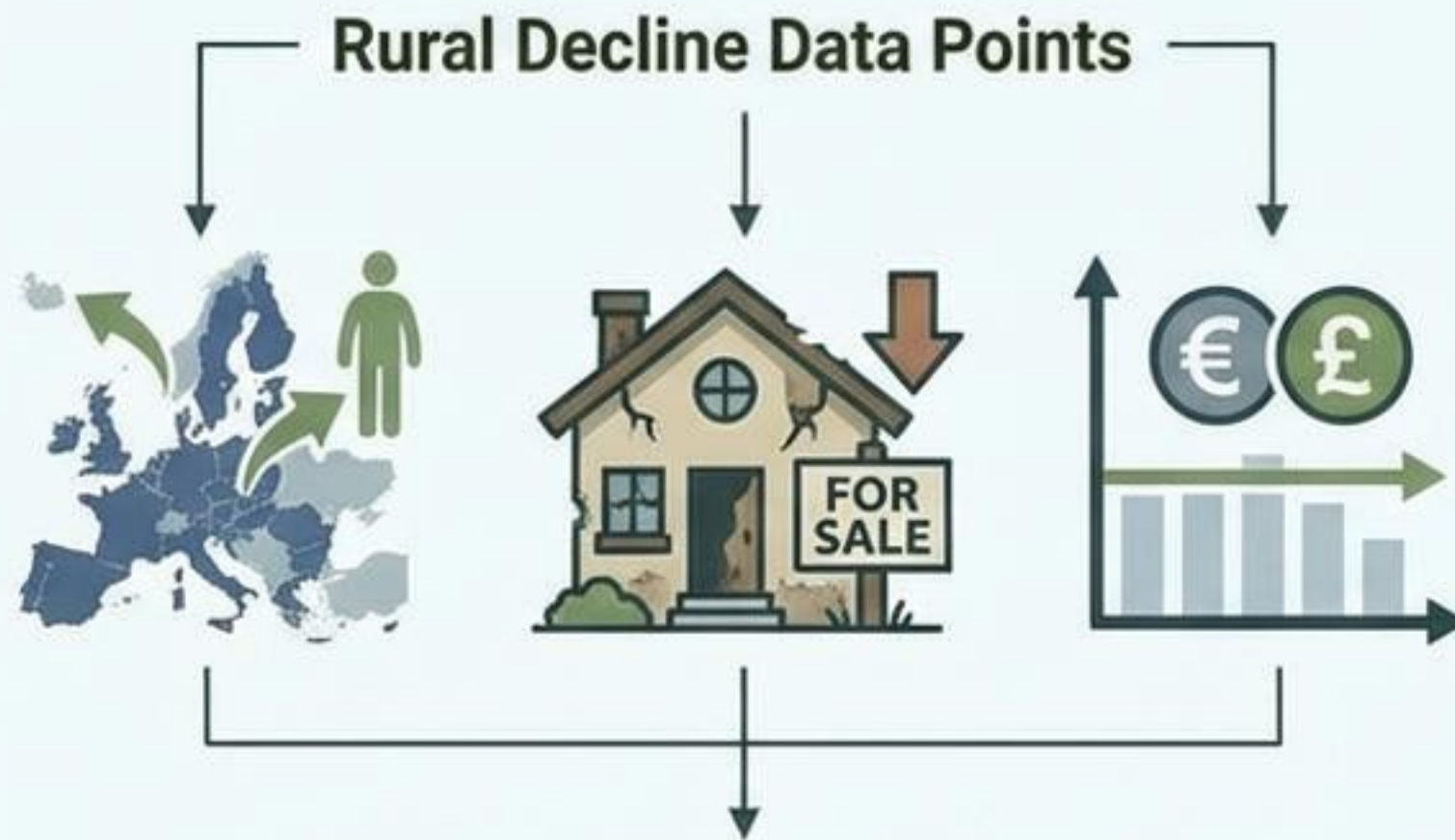


## RURAL LANDSCAPES & CLIMATE TARGETS



- Rural areas least resilient to shocks
- Without place-based models, climate goals remain out of reach
- Slip beyond recovery without immediate, targeted action.

# Context & Rationale: Rural Decline & Insufficiency of Current Models



Over **30 million** rural residents face ageing, outward migration, under-used properties, stagnant local GDP; traditional subsidies insufficient.

## Strategic Need: Micro-Scale Revival



Need micro-scale revival mechanisms embedded in villages.

# Educational Challenges: Evolving Needs & Systemic Gaps

Addressing the disconnect between modern education and ecological literacy.



## Rising Screen Dependency

- Erosion of focus
- Reduced real-world interaction
- Digital distraction



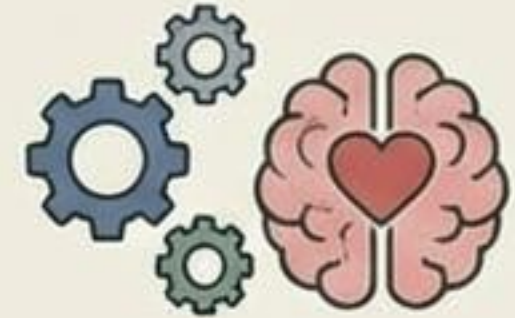
## Climate Anxiety & Declining Outdoor Play

- Growing mental health burden
- Less connection to nature
- Sedentary lifestyles



## Lack of Ready-to-Use Ecological Tools

- Curriculum gaps
- Insufficient hands-on resources
- Missed restoration opportunities

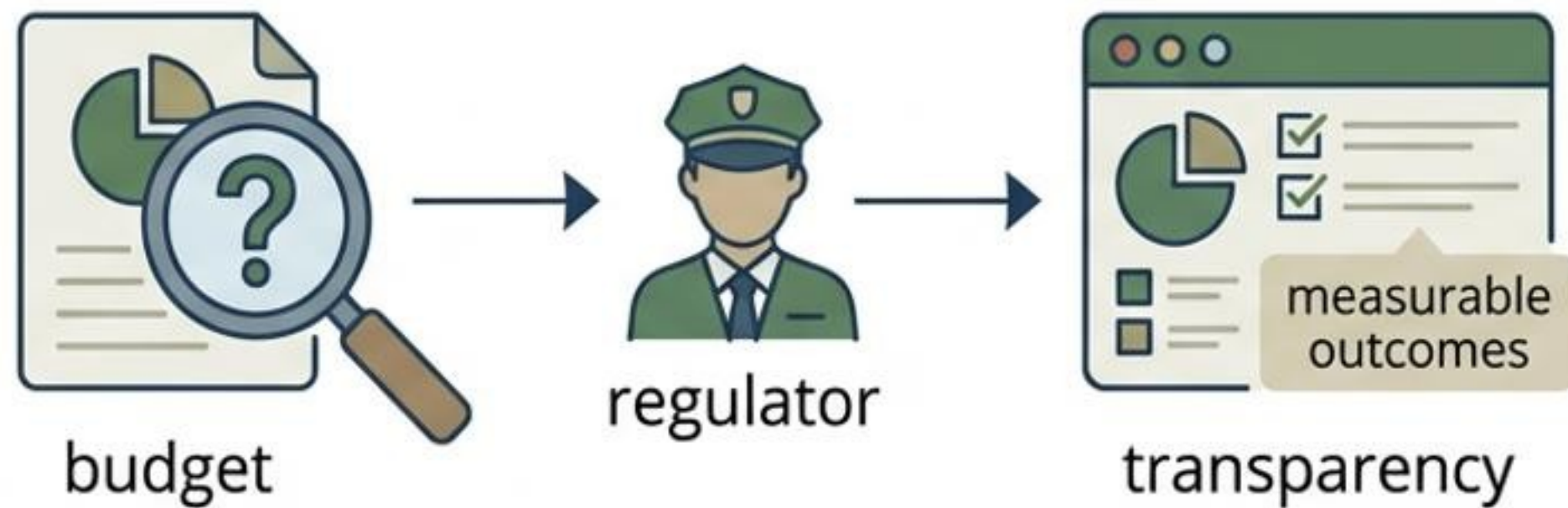


## Eroding STEM Engagement & Wellbeing

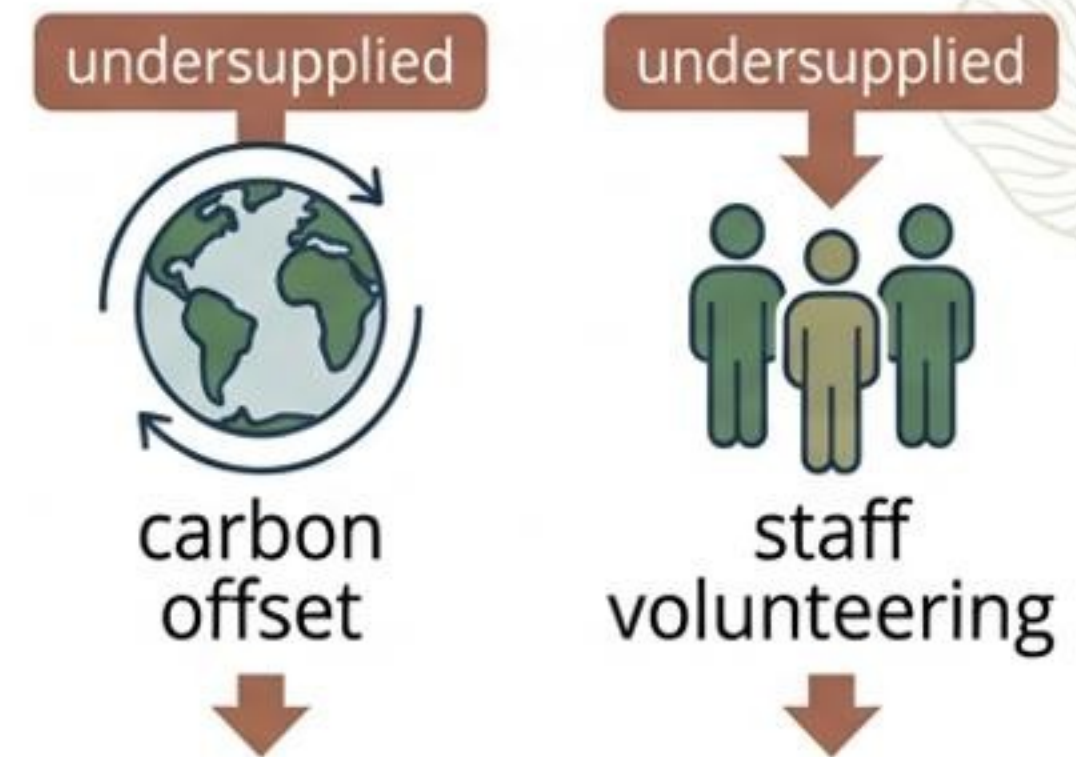
- Disconnect from practical science
- Reduced holistic development
- Need for integrated learning

# Context & Rationale: ESG Landscape Instability

## Corporate ESG Budgets Scrutinised for Green-Washing



- Regulators demand transparent, measurable community-environment outcomes.



- Offset alternatives and staff volunteering pipelines remain under-supplied.

# Context & Rationale: Environmental Restoration and Climate Alignment

## Direct Restoration: Soil, Habitat & Water



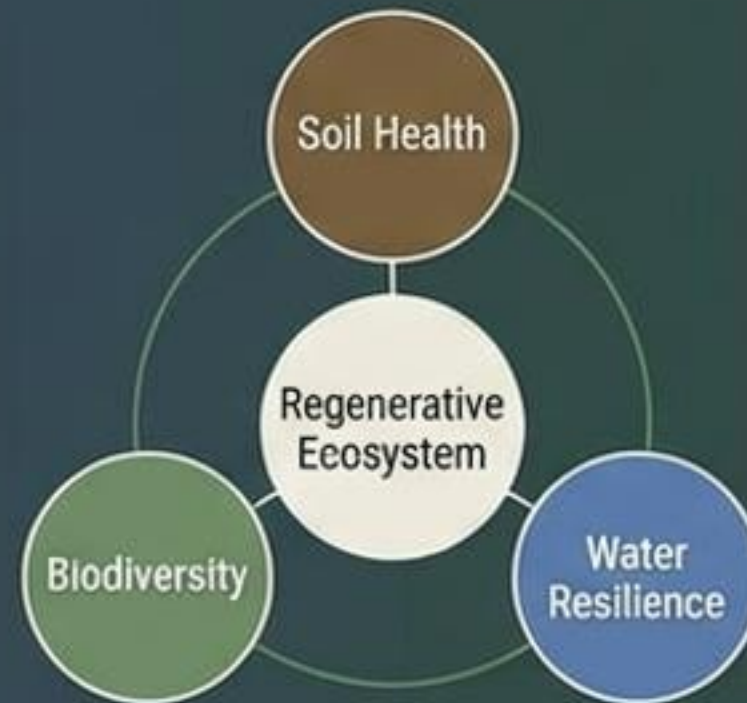
Directly restores soil organic carbon (SOC) through regenerative practices.



Reestablishes vital pollinator habitats and biodiversity corridors.



Implements water-saving landscapes and natural filtration systems.



## Strategic Policy & Commitment Alignment



Aligns with 2030 Climate Targets for carbon sequestration.



Supports the EU Soil Strategy and Mission Soil.



Contributes to national and EU biodiversity commitments.



Integrates with Horizon Europe pillars for innovation.

The Hunstead Project delivers measurable environmental impact, addressing critical ecological degradation and fulfilling key climate obligations.

# Policy Alignment & Strategic Benefits: Supporting UK National Priorities

## 1. Levelling-Up & Regional Growth



- Targeted investment in rural communities
- Reducing regional disparities
- Infrastructure & digital connectivity improvements
- Unlocking local economic potential

Supports UK Shared Prosperity priorities

## 2. Rural Productivity & Innovation



- Boosts agricultural efficiency
- Promotes circular economy models
- Facilitates rural enterprise
- Diversifies farm incomes

Aligns with DEFRA Landscape Recovery criteria

## 3. Nature Recovery & Biodiversity



- Restores ecosystems & habitats
- Enhances carbon sequestration
- Improves soil health & water quality
- Biodiversity net gain focus

Meets post-Brexit environmental tests

## 4. Green Jobs & Skills Development



- Creates sustainable employment
- Upskilling local workforce
- Foster green technology expertise
- Supporting the green transition

Contributes to Green Industrial Revolution



**Strategic Value**



- ✓ Evidence & Impact
- ✓ Innovation
- ✓ Feasibility

Government-Ready Funding Proposal | Evidence-based model for measurable ESG and policy outcomes

# Measurable Impact & ESG Reporting Suite

Generating compliant data for SDGs, CSRD, EU Taxonomy, and UK ESG standards

## Sustainable Development Goals Contribution



**SDG 2: Zero Hunger**  
(Sustainable Food Systems)



**SDG 4: Quality Education**  
(Climate & STEM Learning)



**SDG 6: Clean Water & Sanitation**  
(Water Management)



**SDG 8: Decent Work & Economic Growth**  
(Rural Livelihoods)



**SDG 11: Sustainable Cities & Communities**  
(Resilient Rural Areas)



**SDG 13: Climate Action**  
(Carbon Sequestration)



**SDG 15: Life on Land**  
(Biodiversity & Soil Health)



**SDG 17: Partnerships for the Goals**  
(Multi-Stakeholder Cooperation)

## ESG Data & Reporting



# The Hunstead Model: 100 Keys Fractional Regeneration



# The Hunstead Model: Standardised & Adaptable Modules

Integrated Systems for Ecological Gain and Rural Employment



## **LIVING:** Eco-Lodging

Modular Eco-Lodge Units  
Energy Efficient Design  
Natural Materials Integration  
Low-Impact Footprint



## **FOOD:** Regenerative Agro-Forestry

Permaculture Design  
Soil Health Restoration  
Diverse Crop Systems  
Local Food Sovereignty



## **CREATIVE:** Maker- Wellness-Cultural Hubs

Community Workshops  
Arts & Artisanal Skills  
Wellness & Education  
Rural Enterprise Incubator



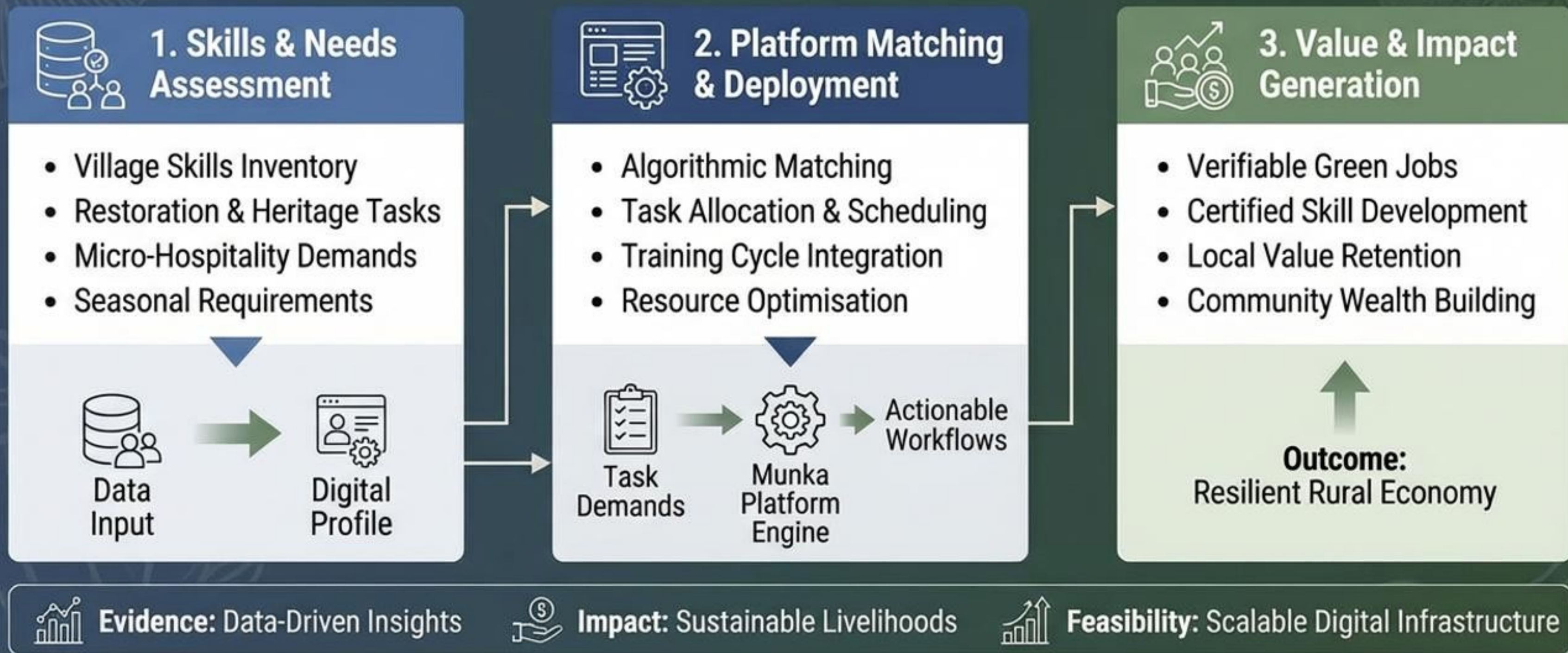
**ECOLOGICAL GAIN:**  
Enhanced Biodiversity  
& Carbon Sequestration

**STACKED  
FUNCTIONS:**  
Maximised Impact

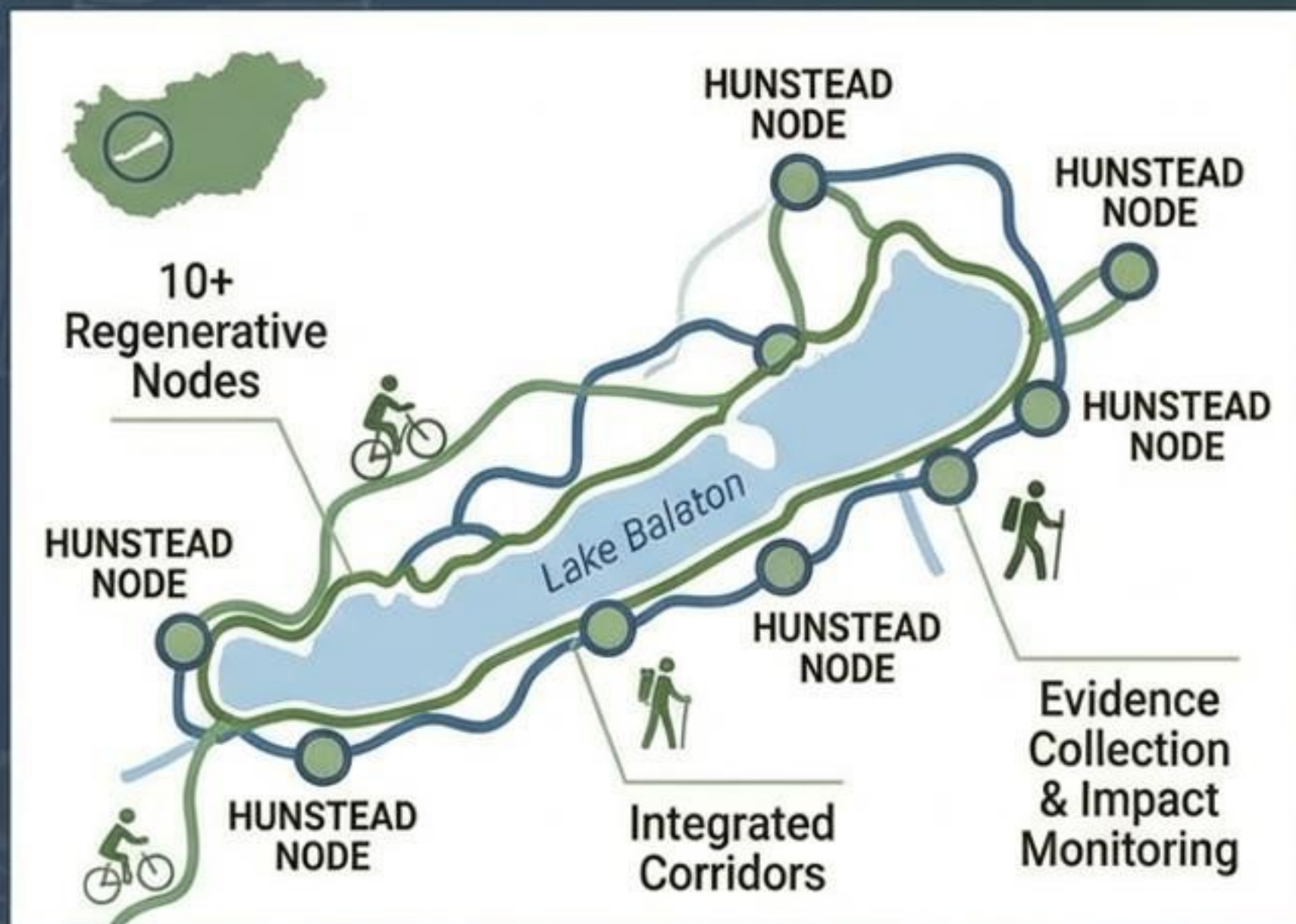


**RURAL EMPLOYMENT:**  
Sustainable Jobs &  
Economic Resilience

# Digital Platform for Rural Labour & Skills Matching: The Munka System



## PILOT CIRCUIT: BALATON REGIONAL NETWORK



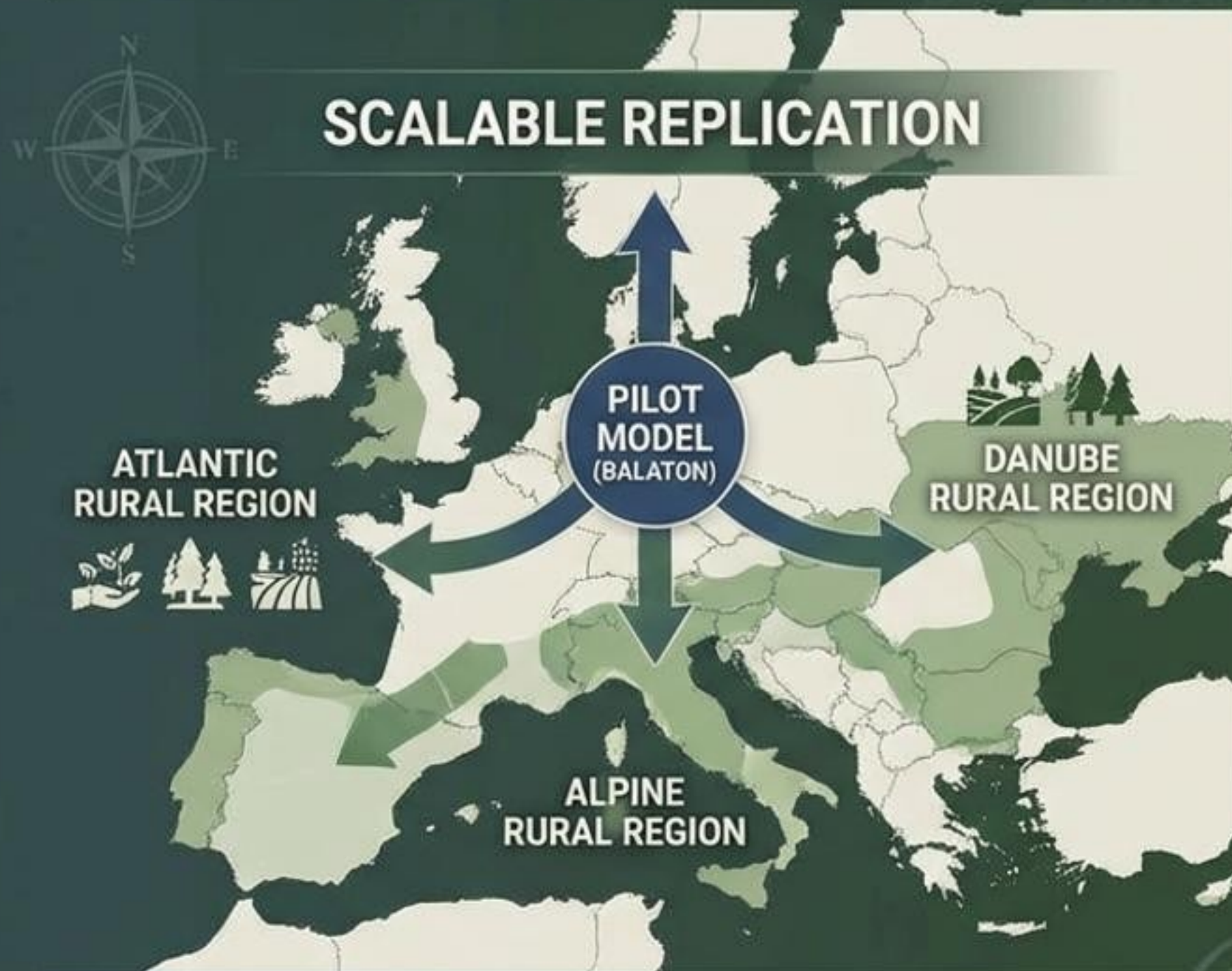
**PILOT  
MODEL**



**CROSS-BORDER  
REPLICABILITY**

Demonstrating operational feasibility and cross-regional application.

## FUTURE SCALABILITY: PAN-EUROPEAN RURAL MODEL



**Strategic  
Value:**

Policy  
Alignment  
(EU/UK)

Standardized  
ESG Metrics

Systemic  
Rural  
Regeneration

# FLAGSHIP SITES: CORE FUNCTIONS & SCALABLE MODELS

Demonstrating Regenerative Rural & Educational Innovation through Integrated Real-World Anchors



## CORE FUNCTIONS: TRAINING, R&D & INTAKE



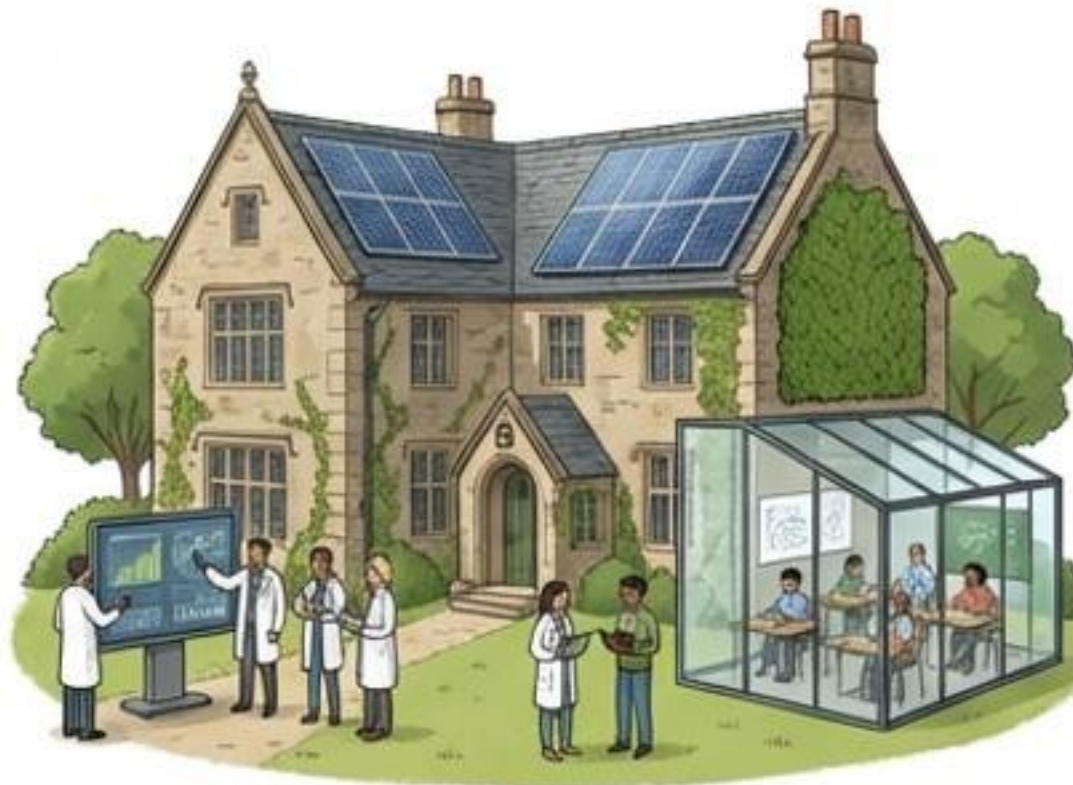
- **Training & R&D Monitoring:** Hubs for skill development, ecological data collection, and best practice research.



- **Visitor Intake & Experience:** Educational gateways and community engagement points for the wider Hunstead network.



## DEMONSTRATION & INNOVATION: MANOR HOUSE RETROFIT



- **Heritage-Plus-Innovation Funding Mix:** Showcasing sustainable adaptation of historic assets with integrated green technologies.



## SCALABILITY & REPLICATION: TEMPLATES FOR RURAL ASSETS



- **Serve as Replication Templates:** Standardized, adaptable models for transforming under-used rural assets globally.



- **Path to Regional Deployment:** Blueprint for scaling the model across diverse EU and UK rural landscapes.



# The Schoolstead Programme: Transforming Under-used Grounds into Productive Learning Plots

A Regenerative & Educational Initiative for Schools



## From Under-used to Productive

- Converts vacant spaces into regenerative plots.
- Active carbon sequestration sites.
- Enhances local biodiversity.



## Student-Led Action & Management

- Pupils co-design, plant, manage, & harvest.
- Hands-on skill development.
- Fosters responsibility & ownership.



## Integrated Climate & Food Curriculum

- Integrates climate literacy & food education.
- Teacher-ready lesson sequences.
- Aligned with STEM & environmental goals.

A scalable model for experiential learning and environmental stewardship.

# SCHOOLSTEAD: REAL-TIME DATA & CURRICULUM INTEGRATION

## DATA COLLECTION & INPUTS

LOW-COST  
SENSORS



SOIL TESTS &  
ANALYSIS



POLLINATOR COUNTS  
& BIODIVERSITY



## LIVE DATA PLATFORM



LIVE DATA PLATFORM

## CURRICULUM ALIGNMENT



CODING &  
DIGITAL SKILLS



SCIENCE &  
ENVIRONMENTAL STUDIES



GEOGRAPHY &  
SPATIAL AWARENESS

## ESG & STRATEGIC VALUE



ESG METRICS &  
INVESTOR REPORTING

Generates measurable data for sponsors while meeting national education objectives

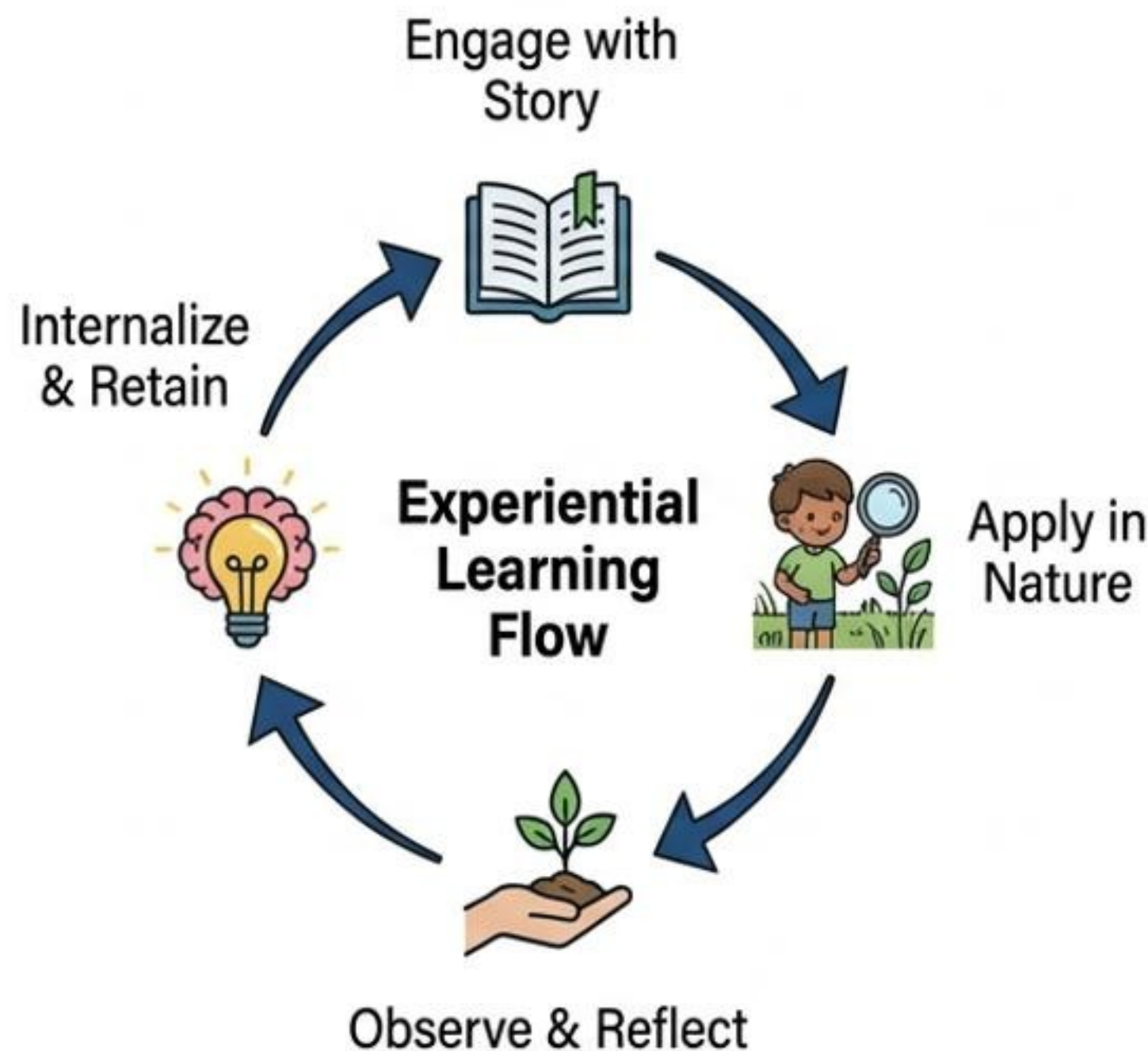
# The Schoolstead Programme: Storybooks & Experiential Learning

Embedding Ecological Concepts & Fostering Connection



## Narrative-Driven Education

- Embeds core concepts: Carbon Cycles, Soil Food Webs
- Characters guide pupils through experiential tasks
- Bridges classroom learning with outdoor application

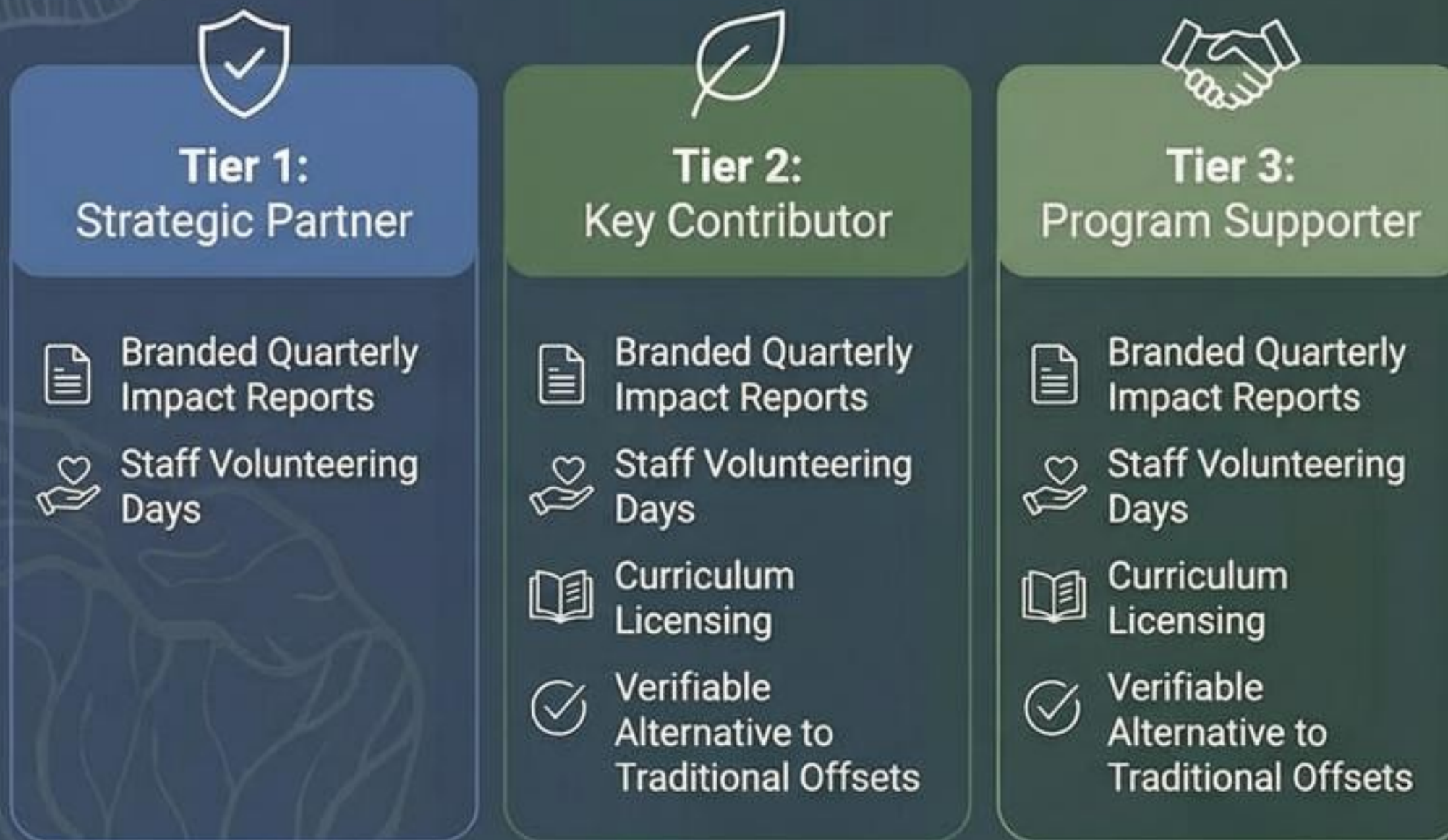


## Key Benefits

- Boosts knowledge retention
- Fosters emotional connection to local landscape
- Cultivates long-term environmental stewardship
- Enhances student engagement

# Annual Funding Tiers & Benefits

## Annual Funding Tiers & Benefits



## Strategic Value Proposition



Offers a credible, measurable alternative to offsets, aligns with corporate social responsibility goals, and delivers tangible community benefits.

# THE HUNSTEAD MODEL: FRACTIONAL REGENERATIVE FUNDING & THE 100 KEYS

Tokenising ecological restoration into inclusive, tradable units to diversify rural capital.

## The '100 Keys' Fractional Model



## Strategic Value & Innovation



**Unlock Inclusive Capital:** Democratizes access to ecological assets, enabling community and micro-investment.



**Diversify Rural Capital:** Moves beyond traditional grants and large private equity buy-outs, creating sustainable, varied funding streams.



**Increase Liquidity & Engagement:** Tradable 'Keys' foster a dynamic, engaged stakeholder base for long-term project viability.



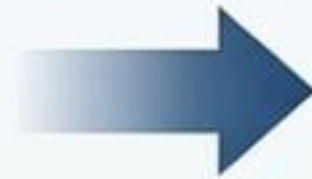
**Tie Investment to Impact:** Directly links capital flow to measurable ecological and social regeneration outcomes.

# Hunstead Project

## STRATEGIC IMPLEMENTATION: DEMAND-LED CONSTRUCTION TRIGGER



**80%**  
**KEY SALES & LOCAL  
COMMITMENT SECURED**



**CONSTRUCTION  
AUTHORIZATION**



**Ensures financially responsible,  
community-validated development**



- **FINANCIAL RISK MITIGATION:**
- Eliminates “White-Elephant” Risk



- **COMMUNITY VALIDATION:**
- Secure Local Commitment & Buy-In



- **RESPONSIBLE DEVELOPMENT:**
- Alignment with Demand & Feasibility

# MEASURABLE ESG REPORTING SUITE: AUTOMATED OUTPUTS & COMPATIBILITY

## AUTOMATED QUARTERLY OUTPUTS



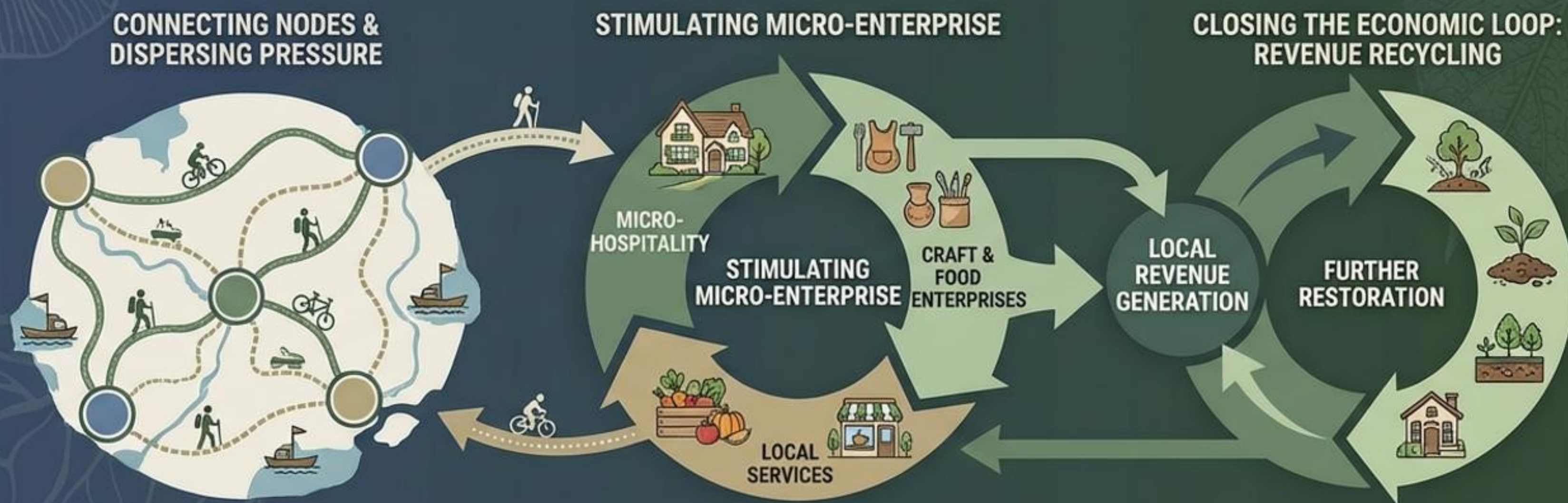
## COMPATIBILITY & ALIGNMENT



Ensuring evidence-based reporting for evaluators and policymakers.

# REGENERATIVE TOURISM & LOCAL ECONOMY: CIRCULAR SLOW-TRAVEL MODEL

Closing the Loop: Connecting Nodes, Dispersing Pressure, and Stimulating Micro-Enterprise.



Slow-travel routes connect hubs, distribute visitor flows, and reduce ecological stress.

Diverse, community-led enterprises thrive on slow-travel engagement.

Revenue is reinvested into ecological and community restoration projects, ensuring long-term resilience.

# Targeted Environmental Impact & Biodiversity Gain

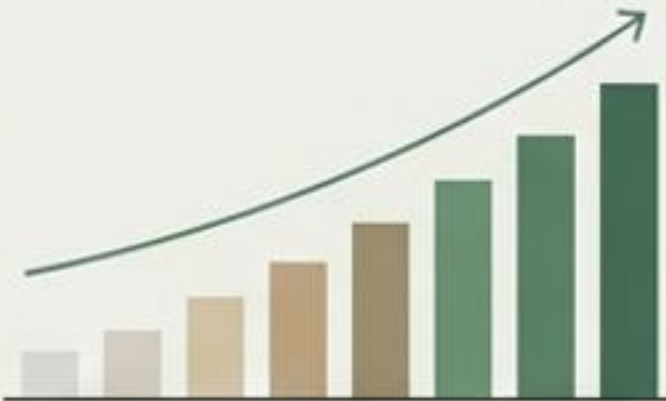


**Soil Health & Carbon Sequestration**

Target

**+2%**

**soil organic carbon/year**



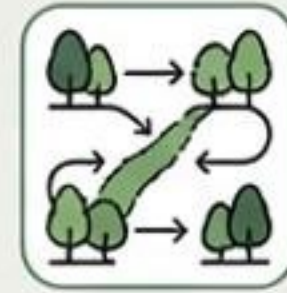
**Pollinator Recovery & Ecosystem Services**

**25%**  
**pollinator increase** within three years



**Water Retention & Resilience**

**30%**  
**water retention** gain within three years



**Landscape Connectivity & Corridor Creation**

Create contiguous biodiversity corridors stretching  
**200km+**  
by year five



# EXPECTED ECONOMIC IMPACT: METRICS FOR RURAL REGENERATION



**250**

## NEW GREEN JOBS

Per 10-Node Cluster.  
Focus on sustainable  
rural roles & regenerative  
practices.



**€1.2M**

## ANNUAL MICRO-ENTERPRISE REVENUE

Stimulating local  
business & creative  
zones.



**15% RISE**

## IN REGIONAL VISITOR SPEND

Driven by regenerative  
tourism & educational  
visits.



**80%  
RETAINED**

## WITHIN 50KM RADIUS

Supporting regional  
supply chains & reducing  
carbon footprint.

# Educational & Social Impact: Anticipated Outcomes & Scalability

## Pupil STEM Engagement



**+20%**

Increase in pupil STEM engagement scores, evidenced by participation and assessment proxies.

## Nature-Deficit Disorder



**-30%**

Reduction in nature-deficit disorder proxies, measured through well-being and outdoor activity tracking.

## Teacher Satisfaction



**100%**

Teacher satisfaction rate with outdoor curriculum deployment and resource effectiveness.

## Scalability Potential



**5,000  
Schools**

Scalable model target, demonstrating deployment across UK and EU educational institutions.

# SOCIAL IMPACT: REVITALISED COMMUNITY & WELLBEING



**COMMUNITY  
IDENTITY &  
ENGAGEMENT**  
VILLAGE WITH  
NEW GROWTH



**35%**  
GROWTH IN  
VOLUNTEER  
PARTICIPATION  
(Year 1 Target)



REVITALISED VILLAGE  
IDENTITY & INTER-  
GENERATIONAL SKILL  
TRANSFER

**STRENGTHENED  
GOVERNANCE & RESILIENCE**



STRENGTHENED  
LOCAL GOVERNANCE STRUCTURES



ENHANCED COMMUNITY  
DECISION-MAKING & COHESION

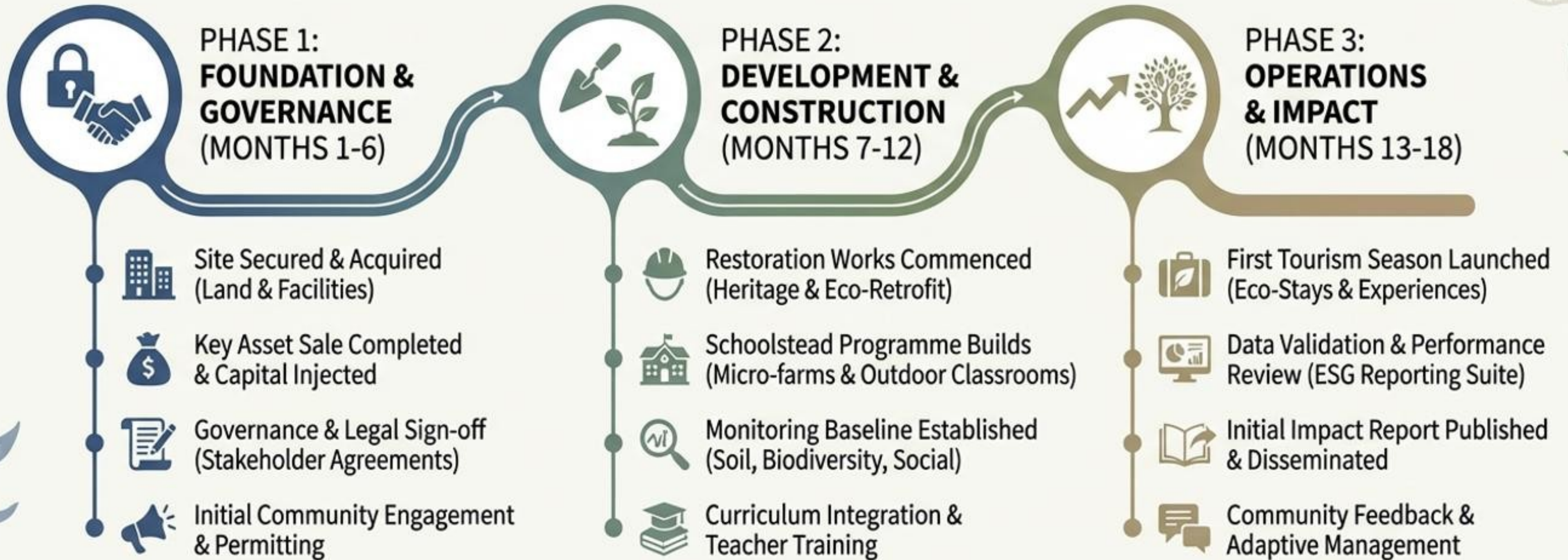
**MEASURABLE WELLBEING  
IMPROVEMENT**



WHO-5 WELL-BEING INDEX UPTICK

- MEASURABLE INCREASE IN WELLBEING via WHO-5 SURVEYS
- REDUCED ISOLATION & IMPROVED MENTAL HEALTH
- FOSTERING LONG-TERM COMMUNITY RESILIENCE

# IMPLEMENTATION TIMELINE – STAGED DEPLOYMENT



Strategic, evidence-based phased approach ensuring feasibility, risk management, and measurable outcomes at each stage.

# Case for Support – The Hunstead Project & Schoolstead Programme

Implementation Plan: Years 2-3 (Regional Deployment)



YEARS 2-3 FOCUS

POLICY & FUNDING INTEGRATION

OPERATIONAL & FINANCIAL SUSTAINABILITY

## REPLICATION TO 50 NODES

- Expand to 50 rural nodes
- Across two strategic regions (UK & EU)
- Interconnected rural network development

## EMBED IN LAPs, LEADER, UK SPF

- Integrate with Local Action Plans
- Secure LEADER programme funding
- Access UK Shared Prosperity Fund calls

## ESTABLISH SPONSORSHIP PIPELINE & REFINE SOPs

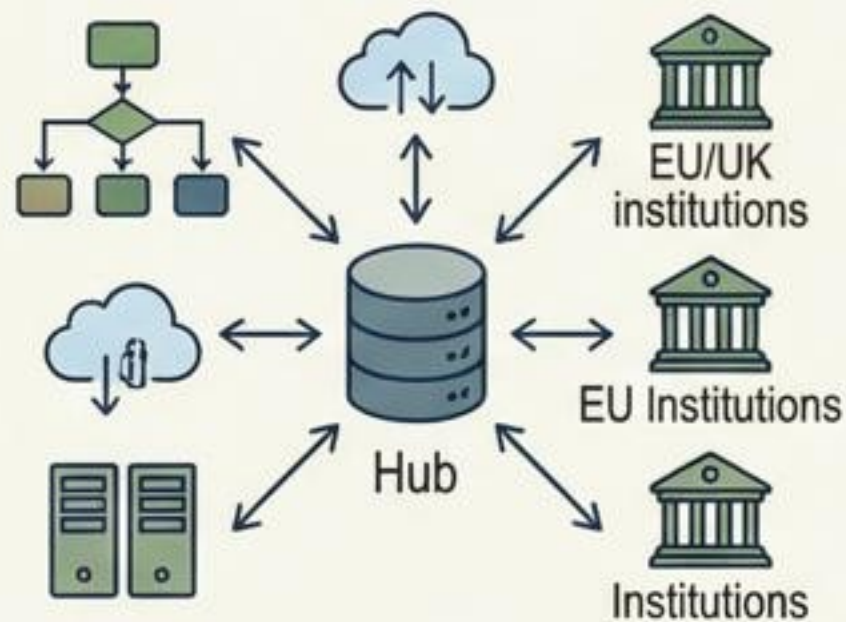
- Develop corporate sponsorship channels
- Refine construction & training SOPs
- Ensure scalable, standardized models



**Strategic Value:** Proven scalability, policy alignment, and robust operational framework for widespread impact.

# Years 4-5: Cross-Border Network & Scale

## Interoperable Data Platform



Secure, Standardized Data Exchange for Impact Reporting & Research.

## Cross-Border Network Expansion (250 Nodes)



Strategic Growth: 250 Regenerative Hubs across UK/EU.

## Mutual Recognition of Key Ownership



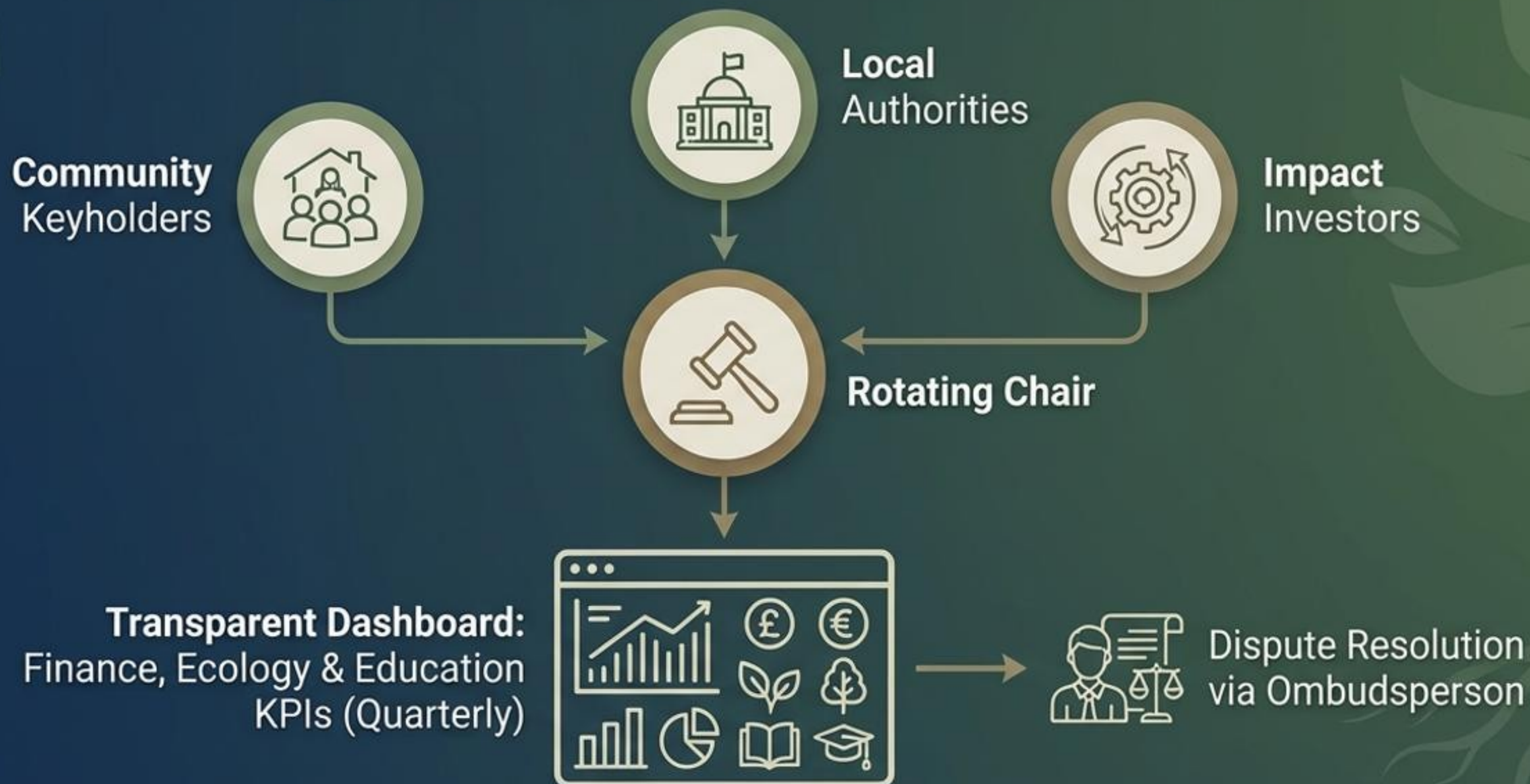
Seamless Fractional Ownership Across Borders for Investment and Stewardship.

## Integration with TEN-T & ERDF Funds



Transport Corridor      Monetary Fund      Future Funding Stream  
Aligned with TEN-T Green Corridors & ERDF Successor Funds for Regional Development.

# Governance & Partnerships: A Tripartite Co-Governance Model



Ensuring accountability, transparency, and stakeholder inclusion through a balanced governance structure.